

## A. Installation procedure for APPro54G software on Planex GW-AP54SP device

NOTE: In case of Planex 54SP device you **CAN NOT** use this install method with other firmware type than the special installation file attached to this manual. The file **appro-planex.bin** should be used **EXCLUSIVELY** for initial install via TFTP protocol, and is not suited for installation via the Web interface. After successful installation of APPro54G software further upgrades are performed via the Web interface and with APPro54G firmware in standard file format.

### Installation on Planex 54SP device using TFTP

- download firmware file intended for TFTP installation: **appro-planex.bin**;
- connect Ethernet port of your PC (Windows or Linux) directly to LAN1 port in Planex 54SP device;
- configure your Ethernet IP address to 192.168.1.10;
- while device is turned off, press and hold AP's Reset button;
- keep pressing the Reset button and power on the AP;
- wait for another 2 seconds until the red LED goes out – after that you can release the Reset button;
- using a TFTP client send file **appro-planex.bin** (in binary format) to IP address 192.168.1.6:  
**tftp -m binary 192.168.1.6 -c put appro-planex.bin** (in Linux)  
or  
**tftp -i 192.168.1.6 put appro-planex.bin** (in Windows);
- wait for about two minutes – during this time the AP will automatically upgrade its firmware and will perform a restart.

NOTE: If the transfer ends with error messages, e.g.:

**tftp -m binary 192.168.1.6 -c put appro-planex.bin**

**Transfer timed out.**

check whether your computer has a correct IP address, ensure a direct Ethernet connection between your computer and AP's LAN1 port, or check if the Reset/power up sequence was performed in proper order.

- after software installation you need to install APPro54G module as shown below;
- AP device with APPro54G software has following default configuration:  
IP address: 192.168.100.252  
login: admin  
password: admin
- further upgrades of APPro54G software are performed only via device's Web interface and with APPro54G's standard firmware files.

NOTE: Do not use this install method on devices that may not be 100% compatible with Planex 54SP.

## B. Verifying the installation

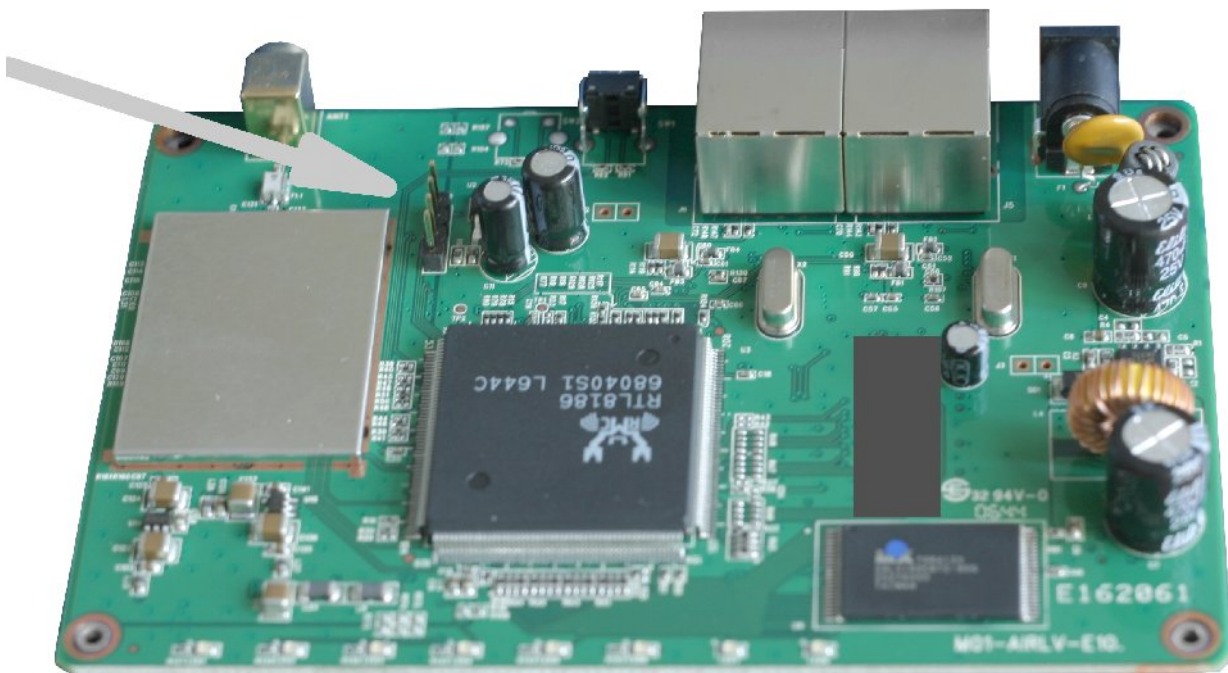
- to verify APPro54G installation, connect computer's serial interface to AP's console port;
- configure terminal emulator with following settings:

transmission rate	38400
data bits	8
parity	off
stop bits	1
flow control	none
- during firmware installation the console will show following messages:

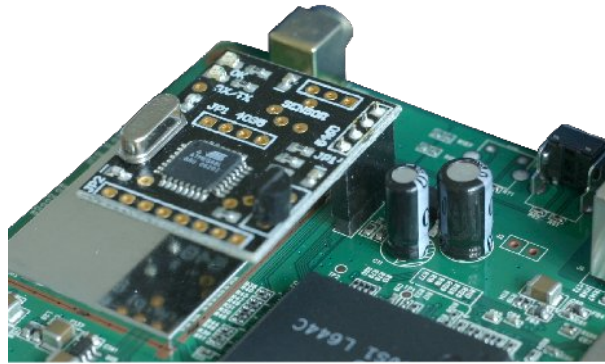
```
UART1 output test ok
Uart init mfid=000000c2 devid=00002249
Found 1 x 2M flash memory
---RealTek(RTL8186)at 2006.02.16-18:47+0800 version 1.4 [16bit](180MHz)
no sys signature at 00010000!
---Escape booting by user
\> **TFTP Client Upload, File Name: appro-planex.bin
**TFTP Client Upload File Size = 00159812 Bytes at 80300000
Success!
\> Linux kernel upgrade.
checksum Ok !
burn Addr =0x00030000! srcAddr=0x80300000 len =0x00159812
.....
Flash Write Succeeded!
\>
reboot.....
```

### C. Installation procedure for APPro54G module on Planex GW-AP54SP device

1. Remove rubber pads and screws from bottom part of AP's case.
2. Remove AP's cover and locate the four-pin connector (arrow).



3. Place the APPro54G module as shown on picture below.



4. Secure the module with appropriate amount of hot glue, so it won't fall off by an accident.



5. Power up the device. After successful detection by the APPro54G software, the green OK LED will be on (arrow).

